

YOUR LICENSE PLATES AT WORK



Funds generated by the red, white and blue license plate support historic preservation throughout Idaho. Fifty cents from each standard Idaho plate goes into an endowment fund. The interest from the fund, in partnership with money from the local community, supports historic buildings, sites and artifact collections throughout Idaho.

Preserving the historic fabric of Idaho for our State's Bicentennial in 2090 through a program of grants and technical assistance.



The Idaho Heritage Trust

P.O. Box 830
Weiser, ID 83672
208-549-1778 Mobile: 208-720-6571
gaetha@mindspring.com
idahoheritage.org

Saving Historic Idaho for Tomorrow



THE
IDAHO
HERITAGE
TRUST

IDAHO HERITAGE TRUST
Progress
Report

Oneida County Pioneer Museum (Cover), by Erich Korte



LETTER FROM THE CHAIR

What do you do when your organization is charged with preserving the historic fabric of Idaho for the State's Bicentennial in 2090? You rely on smart and eager volunteer regional committees, a dedicated Board of Trustees, generous contributors and committed professionals. You rely on partnerships and friendships and enthusiasm of those who love history.

Although the Trustees have funded over 450 grants to 276 projects, there is always more to be done. The Idaho Heritage Trust has funded projects and provided technical assistance in every county in Idaho since the Idaho State Legislature and the Idaho Centennial Foundation trusted us with this immense responsibility. But, in a way, we're still feeling our way. The Board is constantly debating how to fully ensure that examples of our rich agricultural, mining and timber heritage are preserved during these times of rapid change.

The good news is that Idaho's communities are devoted to their local historic buildings and want to keep on using them. The not-so-good news is that the cost of restoration projects is rising. Trust assets exceed \$5.6 million. We are a strong, entrepreneurial non-profit organization. This fall the Board of Trustees will gather to plan our direction for the next five years. We welcome your thoughts and ask you to join us in thanking the Idaho State Legislature for their support over these past seventeen years.

A handwritten signature in black ink that reads "Suzanne Budge". The signature is fluid and cursive.

Suzanne Budge
Chair, Board of Trustees

CHESTERFIELD

The historic town site of Chesterfield continues to be one of the Trust's premier projects. Our first grant was \$125,000 to help purchase one of the few agrarian ghost towns in the American West.



Chesterfield Houses, by Erich Korte

map will need updated



"There is a strange beauty and a compelling fascination about Chesterfield. The small cemetery directly south of the church, the old tithing house, the enduring log homes, the fine brick structures, the unfinished roads prompt further inquiry. What happened to the dream of another Mormon village flourishing on the Western landscape? Chesterfield, Idaho, is one of the best preserved villages established by the Mormons in the nineteenth century."

-Historian F. Ross Peterson

GLADE CREEK

In 1998 Idaho Power Company made a lead gift of \$100,000 to purchase the Glade Creek Camp along the Lewis and Clark Trail. Other contributors included the M.J. Murdock Charitable Trust, the Paul Allen Foundation, William Hewlett, US Bank, First Security Bank, Bank of America, Gene and JoAnn Thompson, Marilyn Sabella and Dick and Pat Hauff. Through the encouragement of Dr. Stephen Ambrose, author of *Undaunted Courage*, and the leadership of then Governor Phil Batt and his wife Jackie, our then Chair John Taylor and the Governor's Lewis and Clark Trail Committee, the Idaho Heritage Trust was able to keep an important part of Idaho's early history preserved for our Bicentennial.

"We fell on a small creek from the left which passed through open glades some of which were one-half mile wide. We proceeded down this creek about two miles to where the mountains closed on either side, and encamped."

-The explorer William Clark, 1805

The Trust gifted the site to the people of Idaho. The Idaho Department of Parks and Recreation manages it.



*Glade Creek (Detail), by Suzanne Budge
Glade Creek (Background), by Erich Korte*

SILVER CITY

The Idaho Heritage Trust has been fortunate to be able to help with the Silver City School restoration project. The Historic Silver City Foundation received help from Senator Larry Craig and funds were forthcoming from federal rural programs to get the project off the ground. Trust architect Fred Walters provides the architectural oversight. And in 2005 and 2006, Tom May chose to contribute \$100,000 in stock to the Idaho Heritage Trust in memory of his brother Eric May. These funds are re-granted to the Historic Silver City Foundation for work on the Schoolhouse. How appropriate it all seems. Ancestors of Tom and Eric May first came to Ruby City, Idaho in 1865. Edward Nugent became the first judge to serve Idaho's 3rd Judicial District. He and his wife Agnes Frost Nugent raised their family in Silver City.



Silver City School, by Erich Korte

Marty Peterson, a homeowner in Silver City, and driving force behind the school's restoration, is one of the Trust's founders. He serves as liaison between the Trust and the other contributors.

"But 140 years after Edward and Agnes Nugent arrived in Silver City, much of the town remains as it was when they moved there. The Idaho Hotel, which would have been being moved from Ruby City to Silver City, continues to rent rooms and serve meals. The Nugent house, on the north side of Jordan Creek, sports a new coat of paint. And the Silver City School, which Judge Edward Nugent and his wife Agnes, along with their three children, watched being built, is about to be restored to its original site."

*-From the Nugent/May Family History
In Memory of Eric May*



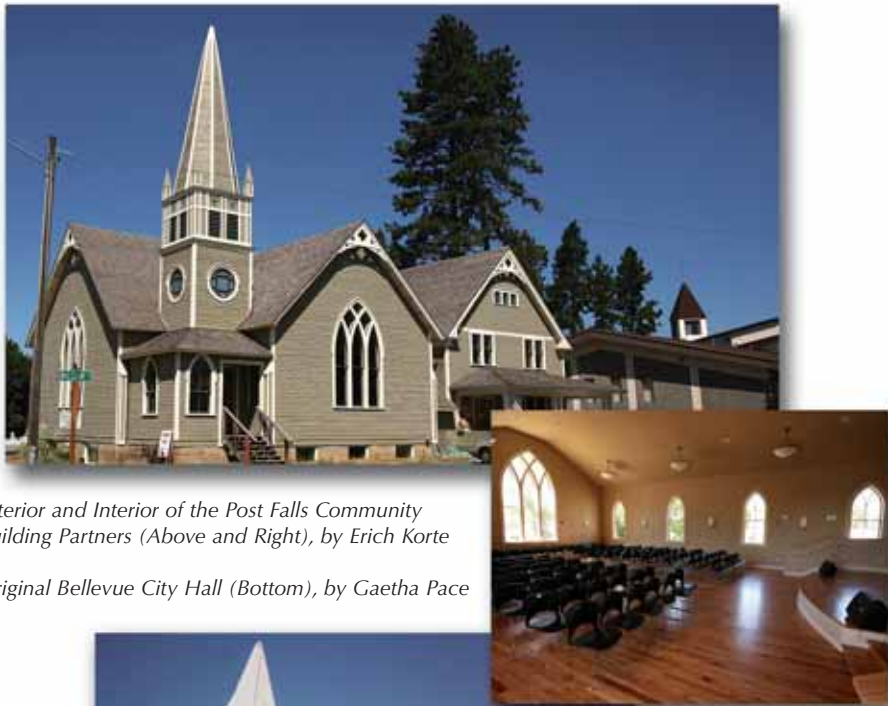
*Interior of Second Floor Classroom Circa 1900 (Above),
Courtesy of Historic Silver City Foundation, Inc.*

Our Lady of Tears (Background), by Erich Korte

TECHNICAL ASSISTANCE

In 2006-2007 the Trust will provide over \$140,000 in architectural, planning, grant writing and interpretive assistance to groups throughout Idaho. The Trust provides free technical assistance to groups throughout Idaho. Advice has been provided to help solve architectural, engineering, grant writing, planning, artifact and photo conservation problems.

Our primary architect is Fred Walters from Cambridge. Fred visits projects throughout Idaho on behalf of the Idaho Heritage Trust.



Exterior and Interior of the Post Falls Community Building Partners (Above and Right), by Erich Korte

Original Bellevue City Hall (Bottom), by Gaetha Pace



Grant writer and researcher Florence Blanchard is working with the Canyon County Historical Society to help find funds to continue the restoration of the Nampa Depot.



John Sack Cabin (Top), Idaho Mining Company Store (Bottom) and Nampa Depot (Background), by Erich Korte

STEELE REESE FOUNDATION

The Steele Reese Foundation awarded \$125,000 – \$25,000 per year for five years – to the Idaho Heritage Trust for projects in rural Idaho with less than 5,000 population and has been a major sustaining partner for ten years.



Lemhi Grange After Restoration (Top), Inn at Mesa Falls After Restoration (Middle), and Inn at Mesa Falls Before Restoration (Bottom), by Erich Korte

Lemhi Grange Before Restoration (Background), by Gaetha Pace

AVISTA

The AVISTA Corporative Fund for North Idaho has provided an endowment of \$213,000. Each year the endowment earnings fund projects in their service area.



Moscow High School (Above) and Staff House Museum in Kellogg (Right), by Erich Korte



Crane Museum in Harrison (Left) and Library in Wallace (Bottom), by Erich Korte



BATTELLE ENERGY ALLIANCE

Battelle Energy Alliance has awarded \$25,000 to the Idaho Heritage Trust for the Pacific Northwest Preservation Field School.

Each year the Idaho Department of Parks and Recreation, the Idaho State Historical Society, the National Park Service and the Idaho Heritage Trust join with other historic and parks departments from our surrounding states to provide training for those interested in learning to preserve historic structures. The program has featured Harriman State Park and in the fall of 2007 will feature the CCC structures at Heyburn State Park.



*Harriman Ranch,
by Erich Korte*



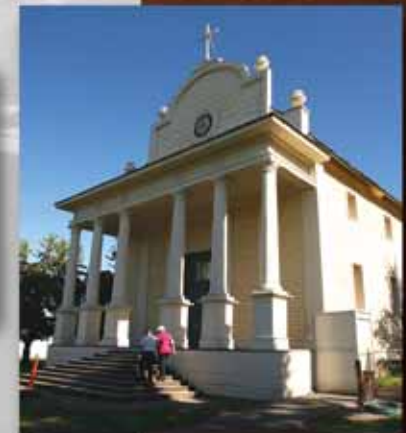
NATIONAL PARK SERVICE PARTNERSHIP PROGRAM

The Northern Cascades Unit of the National Park Service partners with the Idaho Heritage Trust, Idaho Department of Parks and Recreation, the Silver City Homeowners, the Bureau of Land Management and the White Knob Historical Group to work on the Old Mission at Cataldo, the Silver City School and the tram towers at White Knob.



Trestle in White Knob (Left), by Gaetha Pace

Silver City Schoolhouse Windows (Middle) and Cataldo Mission (Right) and Interior of Cataldo Mission (Background), by Erich Korte



GOVERNOR'S LEWIS & CLARK TRAIL COMMITTEE

Thanks to the Governor's Lewis and Clark Trail Committee, the Idaho Heritage Trust has been able to help museums in Winchester, Salmon, Orofino, Pierce and Weippe improve exhibits.

Mary Reed is our Primary Museum Consultant. John Dadabay and Fred Fritchman are our Exhibit Consultants.



Bradbury Logging Museum (Top Right), Lemhi County Museum (Left), and Artifacts at Lemhi County Museum (Bottom Right), Courtesy of Bradbury Logging Museum and Lemhi County Museum

FOREST SERVICE, LANDMARK HISTORIC RANGER DISTRICT

The Idaho Heritage Trust Technical Assistance team is working with the Boise National Forest to document and preserve this significant site.

Other Contractors: Alan Giltzow, John Crowe, AHJ Engineers are working with Fred Walters on the Landmark Ranger Station Project.



North Cabin Floyd Wallis (Left), Landmark Smokechaser (Right), Forester Cabin, and Forester West Cabins (Background)

Photos courtesy of Boise National Forest

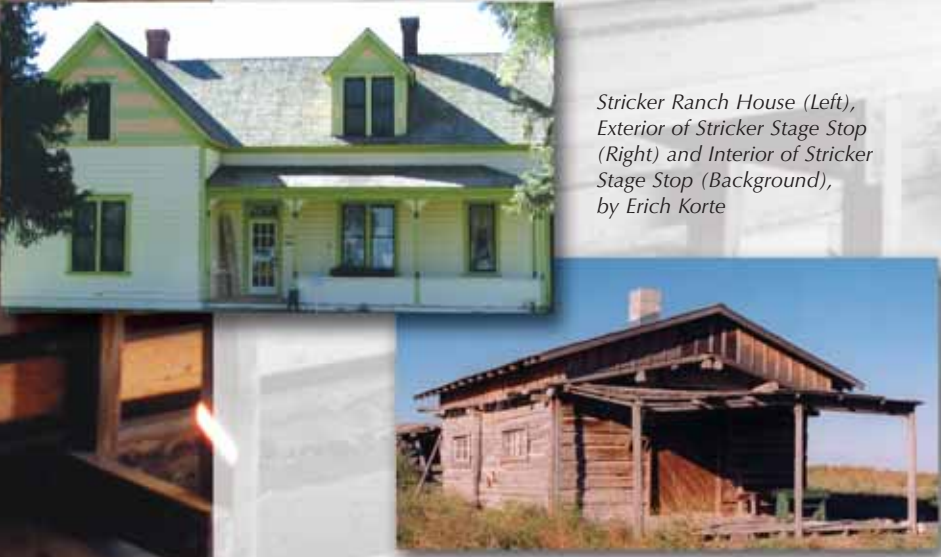


PARTNERSHIPS

The Idaho Heritage Trust could not function without the hard work and dedication of our Regional Committees. These volunteers review all of our grants each year.

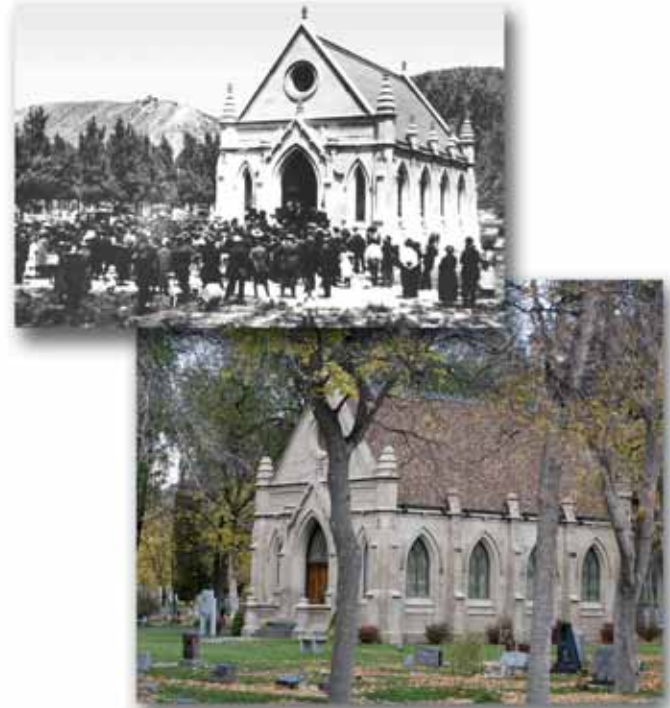
The Idaho Department of Parks and Recreation is the lead agency among our partnerships.

Over the years since the Trust's inception, the Idaho State Historical Society has provided invaluable information and support to the Trust. We continue to work with their knowledgeable staff in identifying important projects throughout Idaho.



*Stricker Ranch House (Left),
Exterior of Stricker Stage Stop
(Right) and Interior of Stricker
Stage Stop (Background),
by Erich Korte*

The National Trust for Historic Preservation, Preservation Idaho, the Idaho Department of Transportation, The National Forest Service and the National Park Service have all helped to define and mature the vision of the Idaho Heritage Trust.



Brady Chapel Dedication May 23, 1922 (Top)

Brady Chapel Restoration, by Erich Korte (Bottom)

IDAHO HERITAGE TRUST

Board of Trustees

SAVING HISTORIC IDAHO FOR TOMORROW

Suzanne Budge, Boise, Chair

John Chapman, Hailey, Region IV Committee Chair

Beverly Harad, Boise

Richard Hauff, Salmon, Region VI Committee Chair

John Hiler, Mountain Home, Treasurer and Region III Committee Chair

Thomas Howell, Ashton

Donna Kendall-Woolston, Moscow, Region II Committee Chair

Steve Kohntopp, Twin Falls

Marla Krigbaum, New Meadows

Alan Minskoff, Boise, Region VII Committee Chair

Judy Mortimer, Idaho Falls

Jerry Myers, Pocatello, Region V Committee Chair

Dennis O'Brien, Wallace

Marilyn Sabella, Sandpoint, Region I Committee Chair

R. John Taylor, Lewiston

Tony Varilone, Soda Springs

HONORARY TRUSTEES

H.F. Magnuson, Wallace

Governor Phil Batt, Wilder

Executive Director

Gaetha Pace, Weiser

*S*AVING HISTORIC IDAHO FOR TOMORROW

Founded in 1989, the Idaho Heritage Trust began as a lasting legacy of the Centennial Celebration of 1990.

MILESTONES:

- ◆ Have funded over \$2 million in grants to 274 organizations and provided technical assistance to more than 300 projects.
- ◆ Provided grants and/or technical assistance in every county in Idaho.
- ◆ Awarded more than 66% of grants to communities of 5,000 or less.

